

The
Ultimate
mobile,
industrial
grade,
self-contained
multipurpose
structure.



Product overview & application guide

DESCRIPTION



Transport Configuration



Raised Roof



Expanded Side Pods

The Trans4mer is an industrial grade mobile work shelter.

Transport is via tractor trailer and pup or on a large flat deck.

It is designed to sit directly on any stable level ground. Foundations are not required.

The center roof section telescopes to a height of 20 feet. The side pods which are contained within the center unit during transport, expand to create a 6 foot wide by 8 foot high by 38 foot long work area on each side of the center unit. They are supported by integral mechanical jacks.

The roof and side pods are positioned using a crane or with optional integral hydraulics.

Set up / take down time is approximately one to two hours.



Installed Configuration with Generator Pup



Transportation (closed) dimensions

In transportation (closed) configuration the unit measure 15'-10" wide by up to 50' long by 13'-2" high. Overall weight is +/-70,000 lbs.

Other lengths are available.

The optional pup trailer is 10' wide by 14'-10" long and 8'-8" high. It can be fitted with a self contained power generation unit.



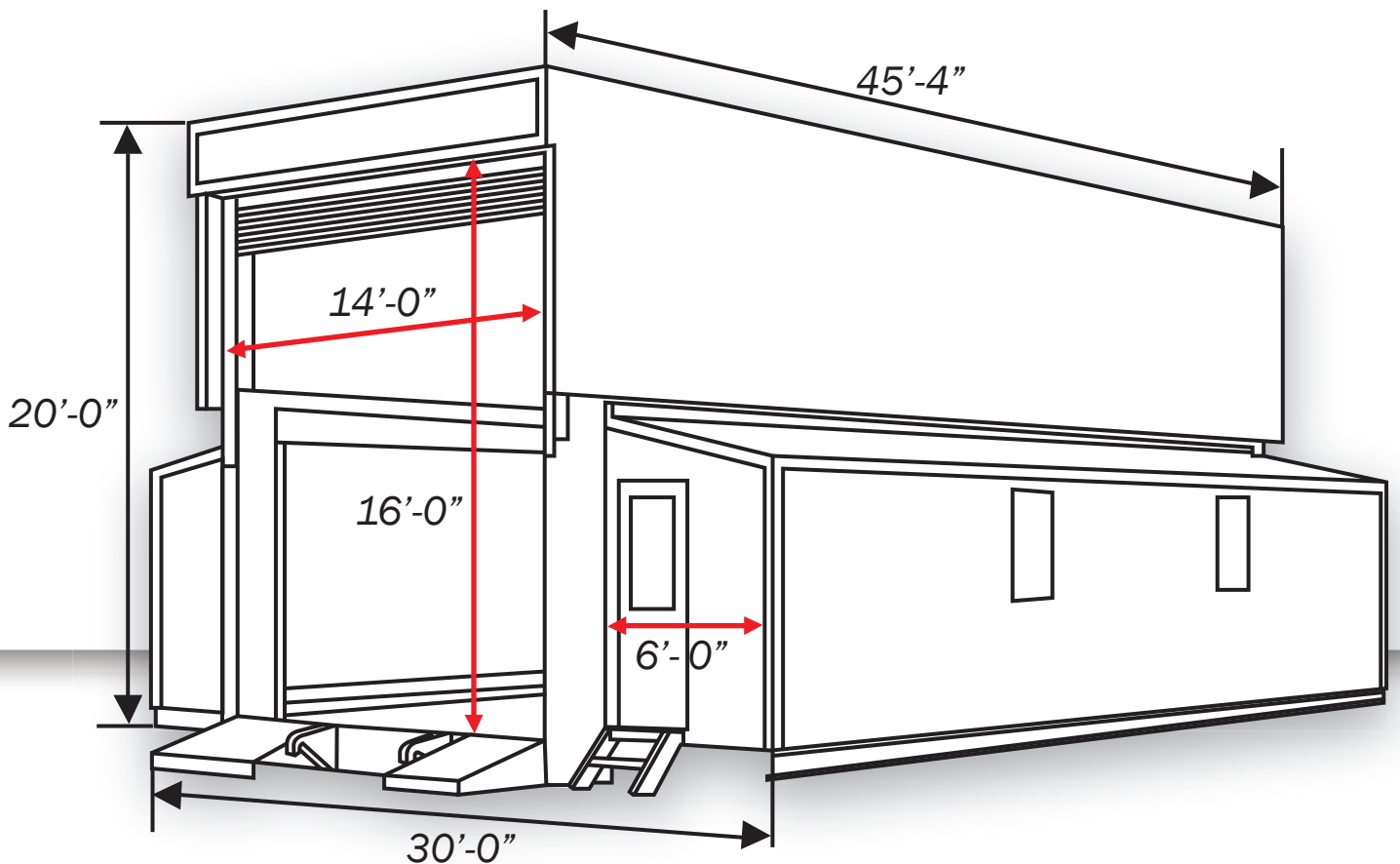
Installed (open) Dimensions

Installed, the Trans4mer unit measures 30 feet wide by up to 50 feet long.

The center section is 20 feet high with bay doors on one or both ends that measure 14 feet wide by 16 feet high. Each side pod is 6 feet wide by 38 feet long by 8 feet high. Multiple units can be joined together for additional space.

No building permits are required and since it is portable it does not affect property values or taxes.

These units transport like trailers and function like heavy duty commercial space when installed.



Floor Load Capacity = +/-125,000 lbs.

Construction

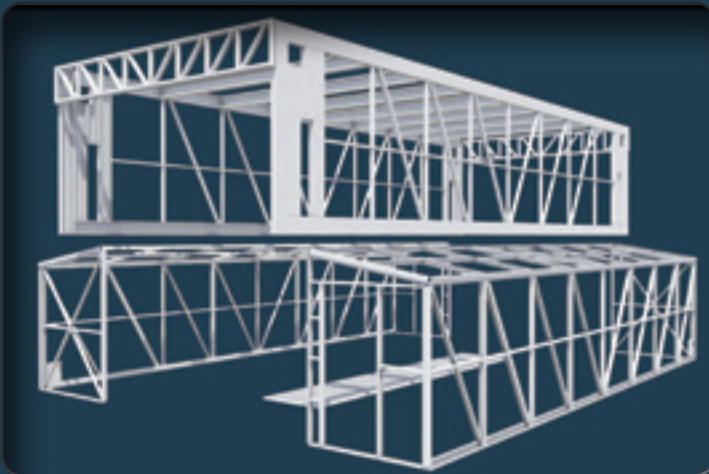
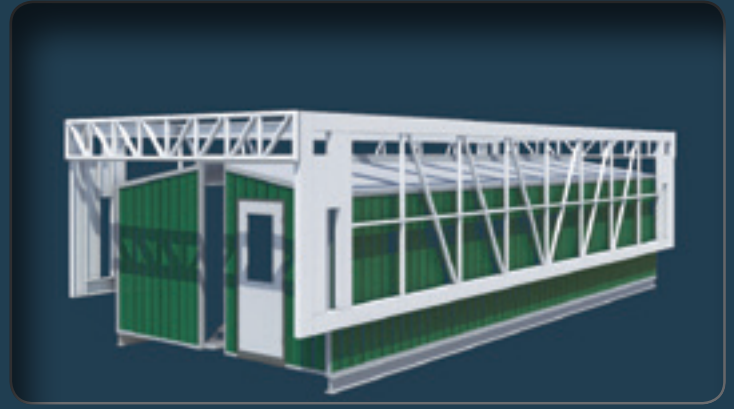
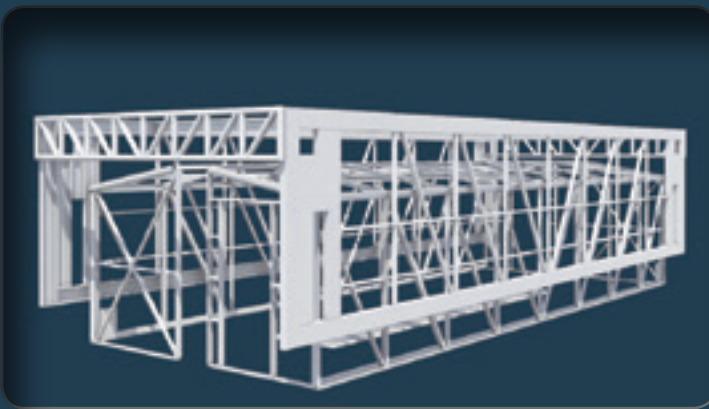
The construction is exterior sheet metal over polyurethane insulation (R-17.5 minimum), structural aluminum and high strength steel.

The roof is designed for a minimum snow load of 35 PSF.

The design parameters far exceed that of conventional portable structures and they meet or exceed those of most site built facilities.

It is ideally suited for remote locations and extreme climates.

The minimum expected functional lifespan is 10 years.



Interior

The interior floor space of a 50' unit is approximately 1500 square feet. The center floor has a capacity of 125,000 lbs. (1.55 PSI).

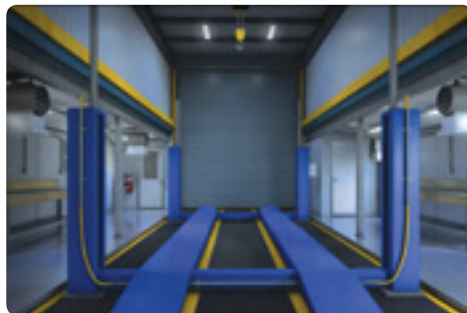
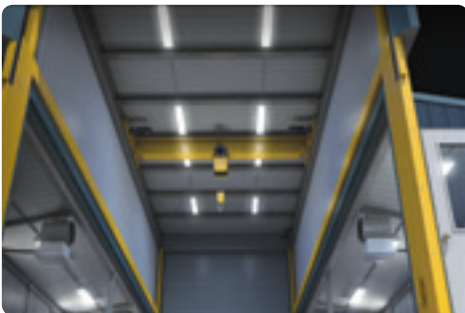
There is a 6' x 6' electrical room located in one corner with a breaker panel and a transformer. The wiring is 3 phase and is customizable for almost any application including wet service.

Within the floor is a 1500 US gallon waste water holding tank with trace wire radiant heat. This provides for containment of environmentally hazardous waste.

Some of the most popular accessories include:

4 ton overhead gantry crane, hydraulic vehicle lifts, manual or automatic vehicle wash systems, air compressors, welders, milling machines, plasma cutters, table saws, power hack saws, and hydraulic presses.

Many other customization options are available on request.





Transport Configuration



Raising the Roof



Installed Configuration with Side Pods Extended



Interior with Overhead Gantry Style Crane



**Custom multi-unit installation
(approximately 10,000 sq.ft.)**

APPLICATIONS

Portable buildings & portable structures

Until now the traditional offering for portable work facilities has included light duty office trailer type products, soft sided tent – like products, modified shipping container type products and modular semi-permanent type products. Unfortunately none of these truly combine the features of being rapidly deployable and suitable for industrial, heavy duty applications. Typically the ones that are portable are light duty (office / accommodation applications) and the ones that are heavier duty require design services, foundations, building permits and long set up / take down times. The ultimate industrial grade, portable building and multipurpose structure changes all that.





Portable Shops

The Trans4mer is truly portable. It arrives as a tractor trailer unit and with the hydraulically automated telescoping roof and side pods it is operational in less than 2 hours.

The interior of the unit is designed to be multi-purpose so is easily reconfigured for a variety of assignments.

The ideal solution for work sites requiring facilities for visiting contractors or temporary projects. No foundations, no building permits, no assembly, no bs.

Portable Work Bays

The Trans4mer means your crew is out of the elements and working efficiently in an insulated and climate controlled environment within hours of arriving on site.

Whether you're driving a bulldozer in for maintenance through the 14 foot wide by 16 foot high overhead doors or assembling equipment with the 4 ton gantry crane, you've got everything you need on site.





Portable Wash Bay

The Trans4mer is ideal for light and heavy vehicle wash bays. Site cross contamination concerns and vehicle maintenance often dictate that vehicles and equipment need to be cleaned even though your miles from the nearest facilities. A Trans4mer unit equipped with either a fully automated drive through vehicle wash system or a manual pressure wash system is the solution.

Our wash system partners have developed equipment that is customized specifically for use in the Trans4mer complete with recycling and filtration components. The trans4mer is wired for wet service conditions and includes a built in heated waste tank in the floor for containment.

Portable Lube Bay

Rolling equipment on remote sites requires regular lubrication schedules to maintain operating efficiency.

The Trans4mer provides an on site, covered, secure, insulated and climate controlled maintenance facility equipped with spill containment, hoists and wheel lift, capabilities.

Built in lubricant storage tanks with distribution pumps and hoses are part of the package.

When your project is complete—the asset can be quickly taken down and moved to the next site.





Secure Portable Tool Crib / Material Storage

The Trans4mer structure incorporates a high strength welded steel I beam floor system with welded structural aluminum walls and roof components. The foam core insulation has a rating of r17.5. Your unit arrives on site with tools and equipment in place and is as secure as your home shop. Materials and equipment can be driven directly into the unit through the overhead doors and loaded or unloaded with the 4 ton electric gantry crane.

Portable Welding Shop

Extreme weather conditions reduce efficiency by up to 75% and threatens the safety of your workers. The Trans4mer provides a self-contained, fully equipped, covered, environment controlled welding facility complete with a high capacity generator. Units are often fitted with multiple welders, plasma cutters, work stations and air quality controls.



Portable Mechanics Bay

Ask a heavy duty mechanic how much longer it takes to do a repair when he's under a frozen vehicle in -40 temperatures with limited access to power tools or lift equipment. Enough said?



Portable Training Lab

Trade schools, polytechnics and community colleges are frequently tasked with providing skilled labor training to remote and aboriginal communities to service demands of the natural resource and construction industry. One of the major challenges to institutions is providing a fully equipped training lab in multiple locations for the practical portion of the instruction. The Trans4mer provides a mobile campus that comes custom fitted with tools and equipment suitable to almost any trade. On completion of the 6 – 8 week course in one location the lab can be transported to the next community and even refitted for another trade. The portable training lab is set up and ready to go in less than a day and student are not required to leave their communities and incur lodging and travel expenses. In locations where building materials and construction services are not readily available, these units can serve as cost effective alternatives to site built structures.



Economic Considerations

- No foundations
- No engineering / design fees
- No property tax
- No building / regulatory permits
- Used units available on short notice / new units in 14 weeks
- Rapid deployment and take down
- Reusable and multipurpose
- Low maintenance
- Improved labor efficiency & safety
- Purchase and lease options
- High resale value

Environmental Considerations

- Integral waste containment system
- No ground disturbance
- No permanent foundations
- Removable on project completion
- Reusable and multipurpose





Sales: 403-257-8492
Engineering: 403-328-7788
Website: www.one4haul.com

4115 – 18 Avenue North
Lethbridge, AB T1H5G1
Canada

Design & Products protected under patents: CA2712719A1, US20110120026